

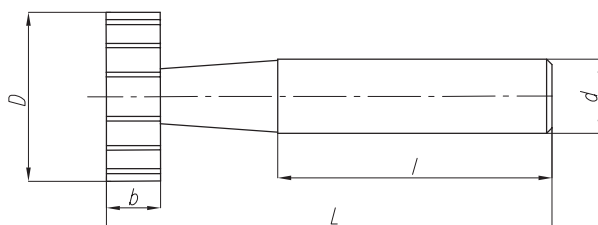
DIN 850 A

Frezy trzpieniowe do rowków Woodruffa, ostrza proste

Woodruff keysat cutters, plain teeth

Schlitzfräser für Scheibenfedernnuten

Фрезы для шпонок типа Woodruff с прямыми зубьями



**DIN
850 A**

Z=8+22

$\gamma=6^\circ$

**DIN
1835 A**

Form A – chwyt walcowy / plain shank / Zylinderschaft / плоский хвостовик

D (h12)	d (h8)	L	l	b	z	HSS	
						Code No 0641-599-	
4.5	6	50	36	1	8	200101	●
7.5	6	50	36	1.5	8	200203	●
7.5	6	50	36	2	8	200305	●
10.5	6	50	36	2	10	200407	●
10.5	6	50	36	2.5	10	200509	●
10.5	6	50	36	3	10	200600	●
13.5	10	56	40	2	10	200702	●
13.5	10	56	40	3	10	200804	●
13.5	10	56	40	4	10	200900	●
16.5	10	56	40	3	10	201000	●
16.5	10	56	40	4	10	201102	●
16.5	10	56	40	5	10	201204	●
19.5	10	63	40	3	12	201306	●
19.5	10	63	40	4	12	201408	●
19.5	10	63	40	5	12	201500	●
19.5	10	63	40	6	12	201601	●
22.5	10	63	40	4	12	201703	●
22.5	10	63	40	5	12	201805	●
22.5	10	63	40	6	12	201907	●
22.5	10	63	40	8	12	202001	●
25.5	10	63	40	5	14	202103	●
25.5	10	63	40	6	14	202205	●
28.5	10	63	40	5	16	202307	●
28.5	10	63	40	6	16	202409	●
28.5	10	63	40	8	16	202500	●
28.5	12	71	45	10	16	202602	●
32.5	12	71	45	6	18	202704	●
32.5	12	71	45	7	18	202758	●
32.5	12	71	45	8	18	202806	●
32.5	12	71	45	10	18	202908	●
38.5	12	71	45	8	20	203002	●
45.5	12	71	45	8	22	203104	●
45.5	12	71	45	10	22	203206	●